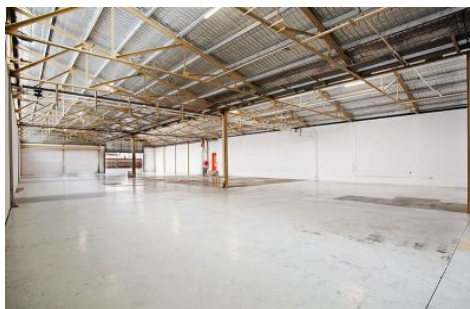


Excelsior



17 Green Street Brookvale NSW

760sqm warehouse with a large roller door, 2 street access and off street customer parking and entry, perfect for any trade supplier wanting signage and exposure to busy Green Street.

- * 760sqm warehouse
- * Clearance - 4.5m to 6.9m
- * 1 year lease available then monthly thereafter
- * 8 car spaces
- * Own male/female amenities and kitchenette
- * Large open plan warehouse with high ceilings
- * Bare shell ready for your touch
- * Fantastic natural light with sawtooth roof
- * Shopfront entry on Green Street
- * Close to all Warringah Mall & all public transport

Type : Industrial
Building Size : 760 sqm
View : <https://portfolio.agentpoint.com.au/excelsior/lease/nsw/northern-beaches/brookvale/commercial/industrial/6683311>



Carole Frankston
02 8888 8888

[For full version visit the website](https://portfolio.agentpoint.com.au/excelsior)

<https://portfolio.agentpoint.com.au/excelsior>