

Excelsior



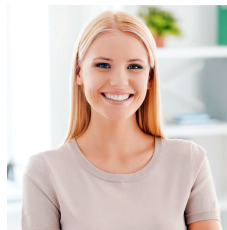
48 Winbourne Road Brookvale NSW

This is an exceptionally well-appointed, freestanding building and is approved as a mechanical workshop.

Total area 639sqm including an additional 200sqm mezzanine, plus 10 parking areas.

Positioned on the Northern side of Winbourne Road between Mitchell Road and Harbord Road Brookvale. This freestanding warehouse commands both street presence and high clearance in one of Brookvale's key and sought after locations. Previously a mechanical workshop for vehicles this warehouse is suitable for many uses including but not limited to manufacturing, warehousing and distribution. Position your business in a very well-appointed building and take advantage of this sought after location

Type : Industrial
Building Size : 639 sqm
View : <https://portfolio.agentpoint.com.au/excelsior/lease/nsw/northern-beaches/brookvale/commercial/industrial/6683304>



Alicia Thomas
02 8888 8888

[For full version visit the website](https://portfolio.agentpoint.com.au/excelsior)

<https://portfolio.agentpoint.com.au/excelsior>