

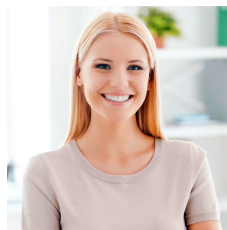
22/5 Carousel Close Cromer NSW

1 1 1

* For a private inspection or virtual tour of this property please contact the agent to arrange an appointment.

Set on the top floor in 'The Esplanade' security building of only 20, this sun-filled designer apartment holds a private setting to the whisper-quiet rear within an intimate cul-de-sac on the border of Dee Why. It's spacious one-bedroom design features quality contemporary appointments, with easy flow to an east facing balcony with private leafy outlooks that's perfect for entertaining in the sunshine. It delivers a low-maintenance lifestyle perfect for first home buyers, downsizers or investors with internal building access to sure basement parking, intercom entry and dual access with pedestrian entry from Campbell Parade. A tucked-away setting only minutes from Dee

Type : Unit
Price : Price Guide \$750,000
View : <https://portfolio.agentpoint.com.au/everest/sale/nsw/northern-beaches/cromer/residential/unit/6672033>



Alicia Thomas
02 8888 8888



Richard Hanson
02 9999 9999

[For full version visit the website](https://portfolio.agentpoint.com.au/everest)